



The Emydex Packing & Processing Module is a fully integrated component of the Emydex production management platform. The main function of the packing management module is to produce labels for stock items that can then be tracked and traced.

In addition to printing a series of production reports, operators can use the packing management console to generate customer specific reports using the Emydex dynamic report generator.

Key elements of the Emydex packing management module are:

Label Design

Labels can be generated for stock items that meet all customer specific requirements. Emydex utilises Nice Labels, a 3rd party labelling software product fully embedded into the Emydex platform. Alternatively direct label printing can also be enabled.

Nice labels is highly flexible, easy to use, printer independent and offers WYSIWYG functionality, which is important for previewing and tweaking customer label layouts before printing.

Nice labels supports GS1 standards, 2D barcodes, RFID label programming, multilingual, multiple dates, and can allow for images & logos to be incorporated onto labels.

Create Stock Items/Traceability

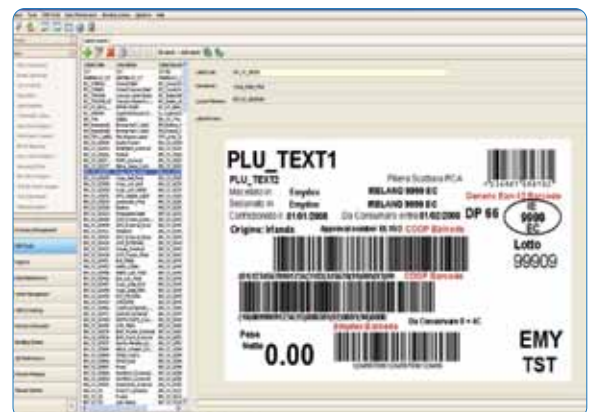
Serialised products are assigned with unique universal identification (UID) numbers allowing for full tracking and traceability of product through the warehouse.

The system allows for both direct palletising (based on target quantity) and direct binning (based on target weights).



▲ WYSIWYG Label Design

▼ Label Management





◀ Work Orders Terminal PC

▼ Work Orders Client PC



Work Orders (Optional)

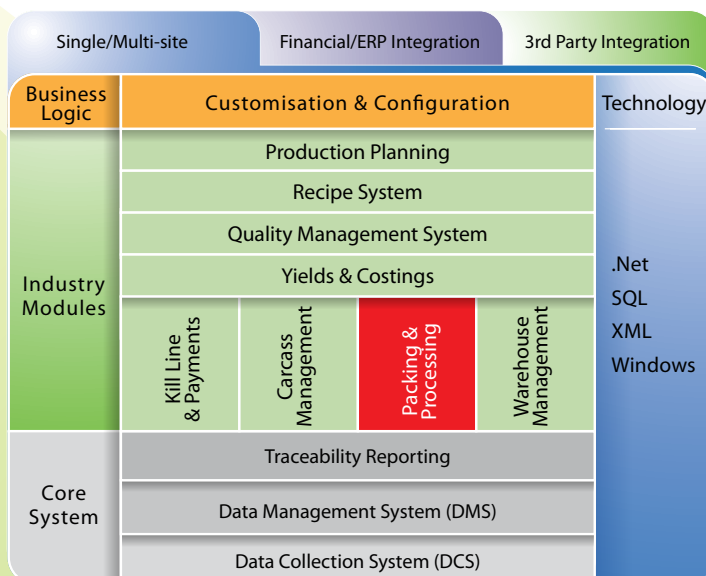
All production lines can be controlled through Work Orders/Production plans which are either entered directly into Emydex or automatically imported from any ERP system.

Work Orders offer production managers the ability to control product priority, over-production, dates, label designs, batch numbers and many other traceability features.

Dynamic macro buttons reflect actual order details and current production levels. Work orders can be pushed to individual or groups of factory floor terminals.

Packing System - Key Features

- **Packing system runs on Touch screen Terminals**
- **Ability to print to multiple printers simultaneously**
- **Nice Labels – WYSIWYG, Printer independent**
- **Supports over 350 different printer models**
- **Drivers for multiple indicators such as Bizerba, Marel/Scanvaegt, Avery, GSE and Alibi support**
- **Multiple levels – Unit, Case, Pallet**
- **Multiple Dates with advance offset rules**
- **Dynamic Screens allowing flexibility to change screen layout and add questions as required**
- **Transaction History with Cancel Box at Terminal Facility**
- **Generate reports locally at Terminals**
- **Dynamic Macro Keyboards – unlimited shortcuts to PLU and Questions etc.**
- **Individually weighed and priced pieces can auto-generate case end labels**
- **Offal Packing – linked back to Kill line for Yields analysis**
- **Rework/Relabelling**



Packing Management Module is fully integrated into the Emydex platform

